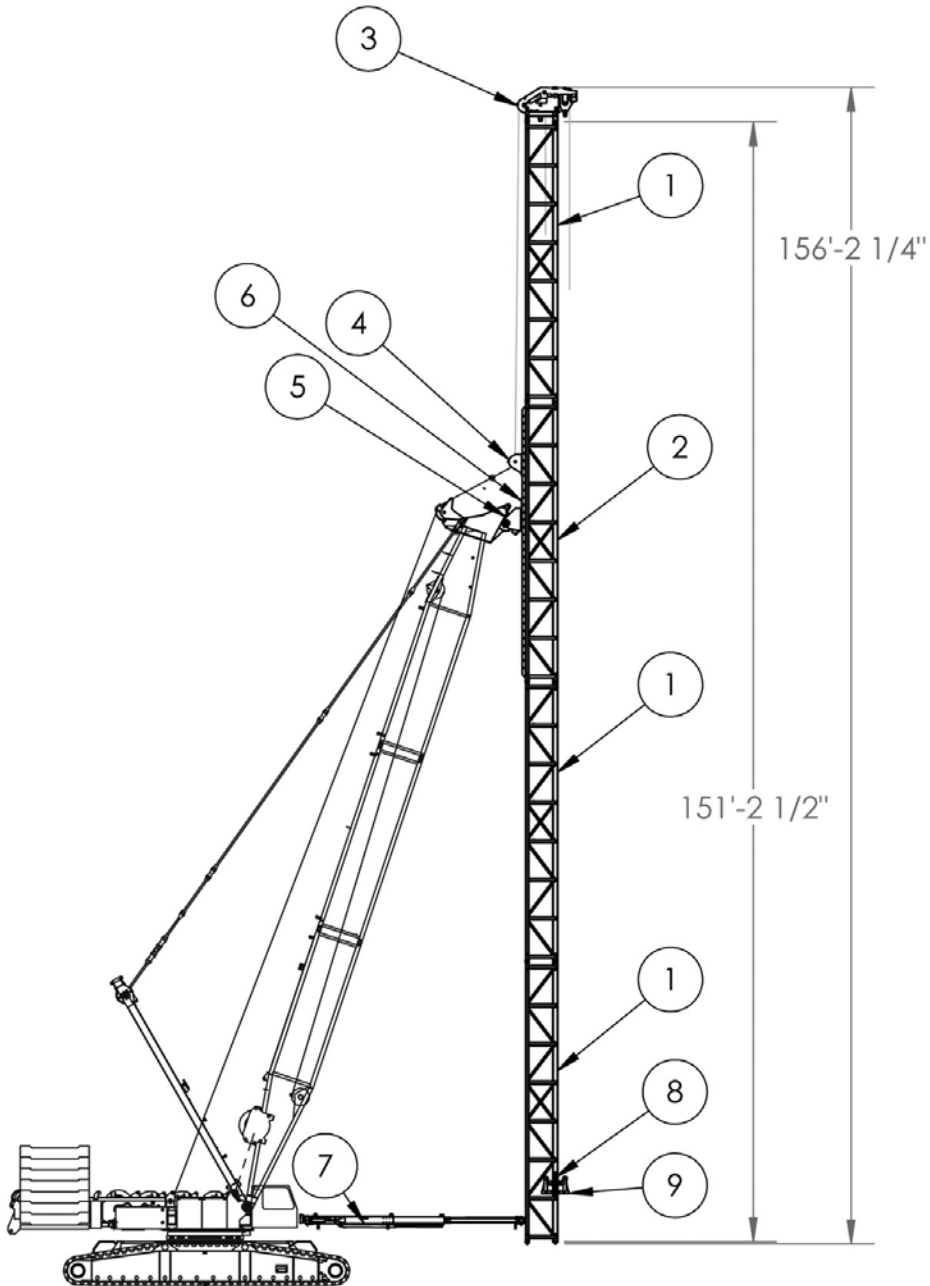


U-42 X 150' FIXED LEAD SYSTEMS (COMPLETE)



ITEM NO.	DESCRIPTION	QTY	WEIGHT
1	(#4240I) U-42 X 37.5 FT INTERMEDIATE SECTION	3	20,631 LBS
2	(#8000289) U-42 X 37.5 INTERMEDIATE SECTION W/ SLED RAILS	1	8,244 LBS
3	(#8000343) U-42 3 LINE HEAD BLOCK WITH REVOLVING FAIRLEADS	1	5,262 LBS
4	(#8000366) 3 SHEAVE ROOSTER SLED U-42	1	1,443 LBS
5	(#8000238) BOOM POINT CONNECTOR	1	1,590 LBS
6	(#8000265) U-42 BOOM POINT CONNECTOR SLED	1	1,569 LBS
7	(#1200-1) HYDRAULIC/MECHANICAL SPOTTER RETRACTED 14'/EXTENDED 26'8" (HYDRAULIC 10' / MECHANICAL 10') 2 AXIS SIDE SWING EACH WAY 19 DEG	1	4,500 LBS
8	(#216-1001) PILE GATE BODY SET	1	253 LBS
9	(#42-CS-SET) PILE GATE ARM SET	1	352 LBS
TOTAL:			APPROX 43,844 LBS

