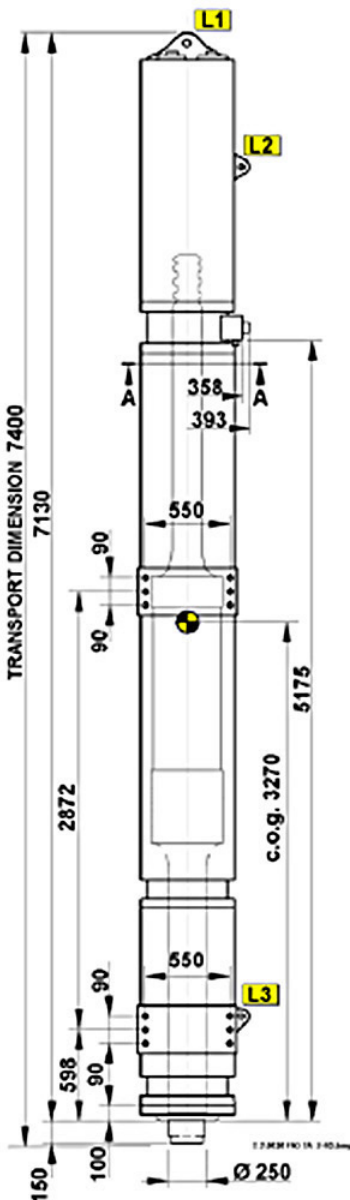
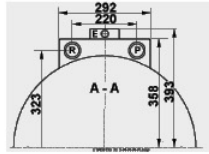
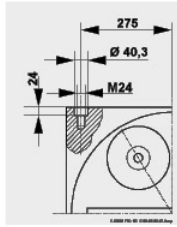
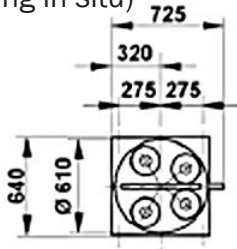


Specifications: S-70 HydroHammer® Uses P-250 Power Pack

APPLICATION: For steel piles, driving and extraction.
 (casting in situ)

Code no. 85 10 00 05



Weights approx in:

Metric tons/US tons

Ram :	3.5 / 3.86
Hammer (incl. ram, in air) :	8.3 / 9.12
Hammer (incl. ram, in salt water) :	6.2 / 6.8

(Only if fully submerged)

Energy per Blow

Max:	70 kNm/51,629.4 ft lbs
Min:	2 kNm / 1475.12 ft lbs
Number of blows:	50 min

Hydraulic Data

Operating pressure :	220 bar
Max. pressure:	350 bar
Recommended oil flow:	250 l/min

Gas Filling Pressure

Vertical pile driving only! Values will vary for:

1. Pile driving under different angles with the vertical.
2. Pile driving underwater depending on water depth.

Supply accumulator (Nitrogen):	120-140 bar
Return accumulator (Nitrogen):	4-5 bar
Cap (Nitrogen or Air):	10-13 bar

Safety Setting

Cap :	40 bar
-------	--------

Hose Connections

Oil supply 1¼" hose (P)	M52x2 male
Oil return 1¼" hose (R)	M52x2 male
Nitrogen to cap (CA)	R 3/4" male

Pos. Lifting Eyes	WLL (working load limit)- metric/US tons	HOLE Ø	THICKNESS
L1	25/27.6	Ø52mm	70mm
L2 / L3	9/ 9.9	Ø40mm	40mm