

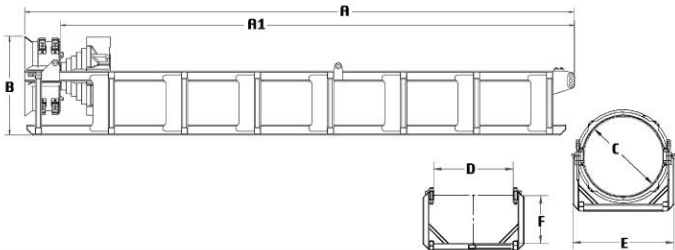
**PILECO**

3321 E Davis St • Conroe, TX 77301

936.494.4200 tel

Sales@Pileco.com

www.Pileco.com

**OFFSHORE LEAD A104 SERIES****Standard Units**

Lead Type	A	A1	B	C=pile Ø	D	E	F	Lead Weight lbs	Helmet	Weight Total lbs
10036	27.2 ft	ft	62.5 in	36 in	42.5 in	58.5 in	29 in	5,757	G-514	13,150 lbs.
10042	36 ft	ft	72 in	42 in	48.5 in	66.5 in	37 in	6,108	G-515	22,200 lbs
10048	36 ft	ft	75 in	48 in	54.5 in	72.5 in	37 in	11,460	G-515	27,552 lbs
10066	40 ft	38.5 ft	85 in	66 in	66.5 in	84.5 in	38.5	13,880	G-516	43,861 lbs

**Metric Units**

Lead Type	A	A1	B	C=pile Ø	D	E	F	Lead Weight Kg	Helmet	Weight Total kg
10036	8.3 m	m	158.8 cm	91.4 cm	108 cm	148.6cm	73.7cm	2,611	G-514	5965 kg
10042	11 m	m	182.9 cm	106.7 cm	123.2 cm	169cm	94cm	2,771	G-515	10070 kg
10048	11 m	m	190.5 cm	121.9 cm	138.4 cm	184.2cm	94cm	5,198	G-515	12,497 kg
10066	12.2 m	11.7 m	216 cm	167.6 cm	169 cm	214.6cm	98cm	6,296	G-516	19,895 kg