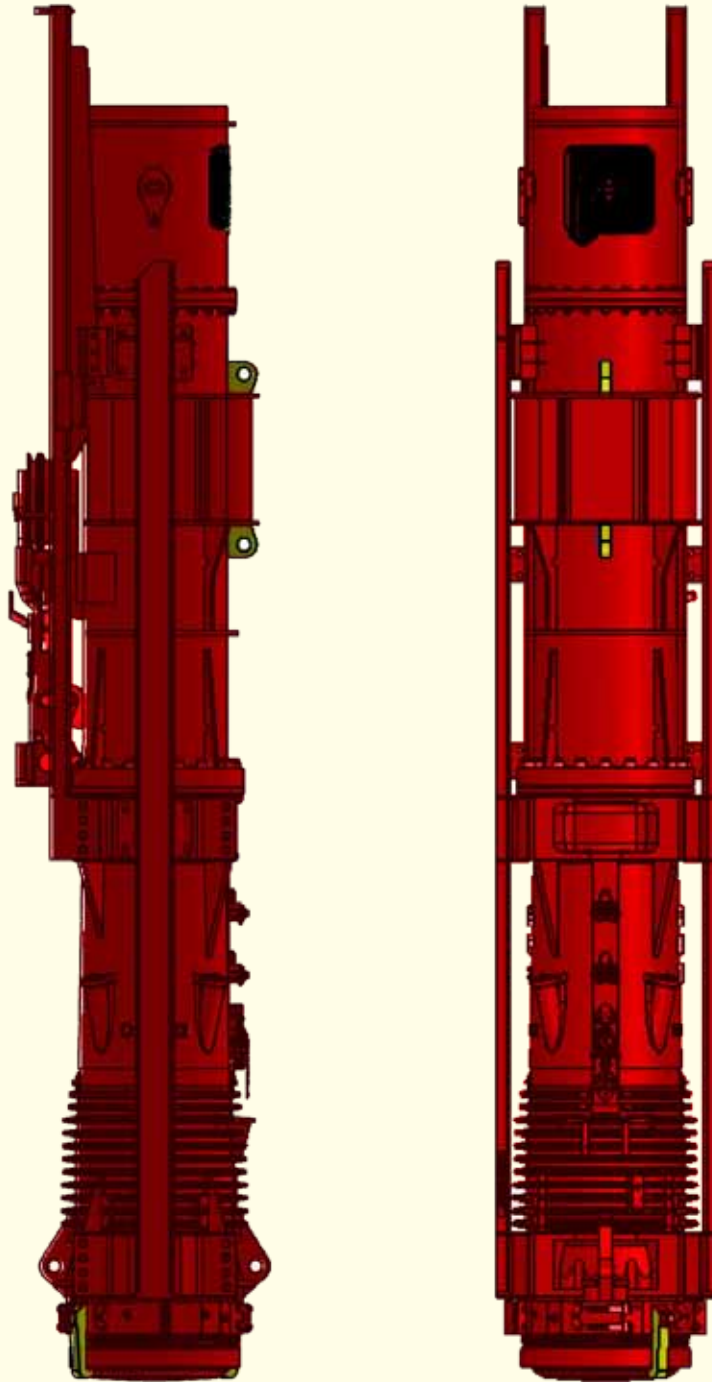
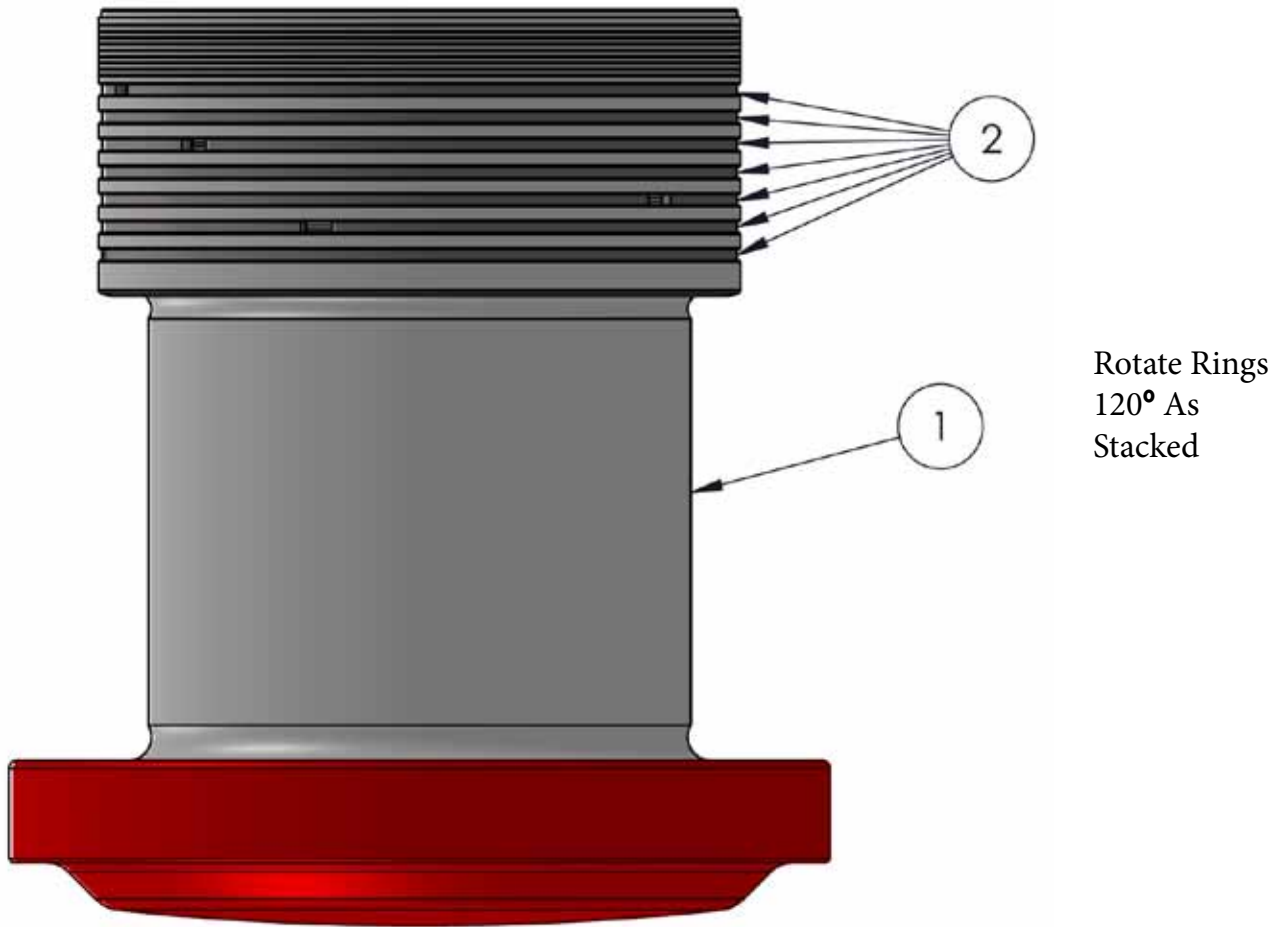


Diesel Pile Hammer D160-32
Parts Manual



Index Page

Impact Block	page #3
Striking Weight Piston	page #4
Lower Cylinder Complete	page #5
Lube Pump	page #6-8
Cylinder Complete	page #9
Pressure Valve	page #10
Manual Variable Delivery Fuel Pump	page #11-17
Pump Element 45MM	page #18
Stop Valve Complete	page #19
Suction Valve Complete	page #20
Check Non-Return Valve	page #21

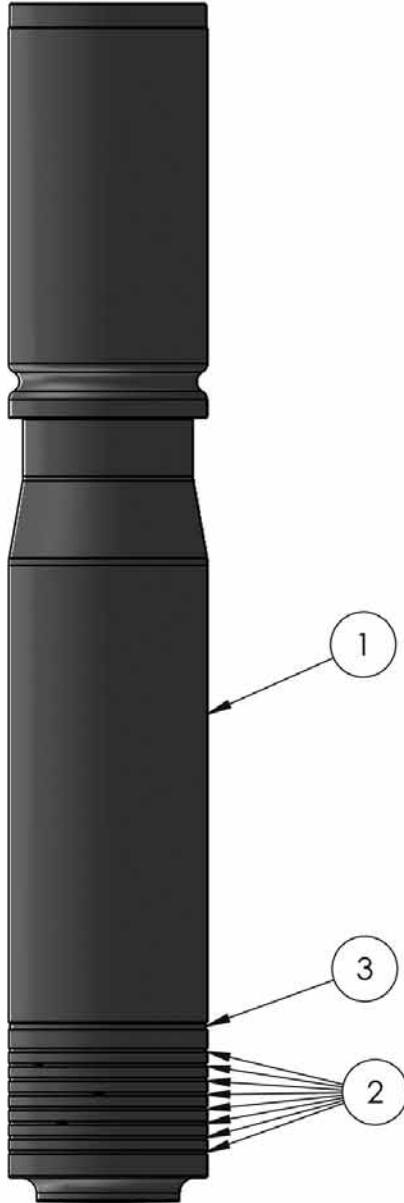
**Impact Block
Complete**


*each part number links to web site part

ITEM NO.	PART NUMBER	DESCRIPTION	QTY.
1	220201	IMPACT BLOCK	1
2	220202	PISTON RING	7

Striking Weight (Piston) Complete

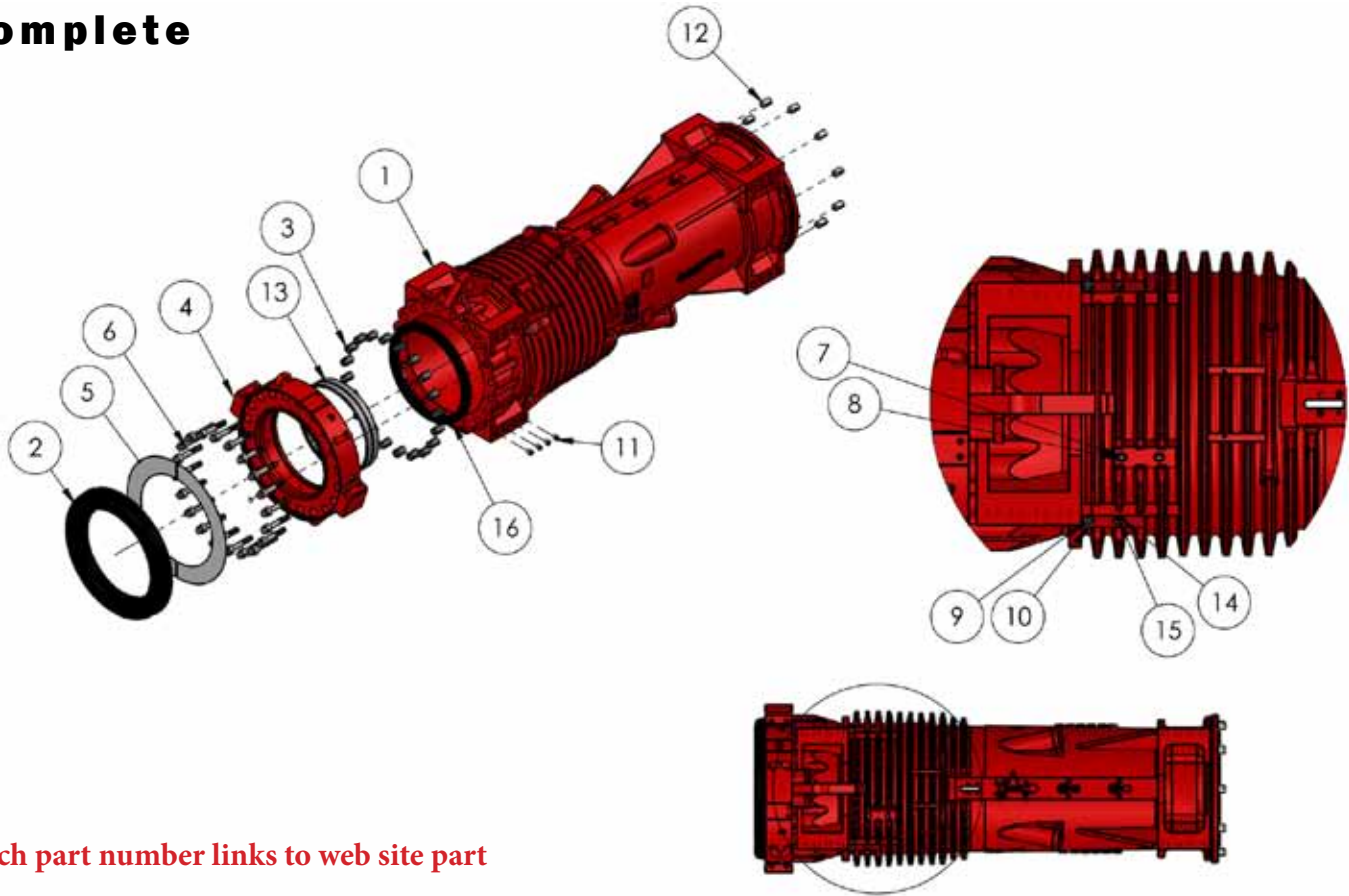
*each part number links to web site part



ITEM NO.	PART NUMBER	DESCRIPTION	QTY.
1	220302	STRIKING WEIGHT(PISTON)	1
2	220202	PISTON RING	8
3	220304	CATCH PISTON RING	1

Rotate Rings
120° As
Stacked

Lower Cylinder Complete



*each part number links to web site part

ITEM NO.	PART NUMBER	DESCRIPTION	QTY.
1	220103-160	LOWER CYLINDER PART D160	1
2	220102	RUBBER RING SET	1
3	98807	DOWEL PIN 55 X 90	20
4	220104	CYLINDER END RING D160/D180	1
5	220108	SPACER PLATE	1
6	20038	HEX BOLT M36 X 210	20
7	90002	SEALING RING 18 X 22	2
8	91460	PLUG SCREW M18 X 1.5	2
9	22592	REDUCER	8
10	90791	GREASE NIPPLE M10 X 1	8
11	93233	36M THREADED INSERT	32
12	94281	DOWEL PIN 50 X 80	10
13	220105	D160/D180 INNER END RING	1
14	92016	20MM X 1.5 PLUG SCREW	5
15	92031	SEALING RING A20 X 24	4
16	220002	INNER DAMPING RING	1

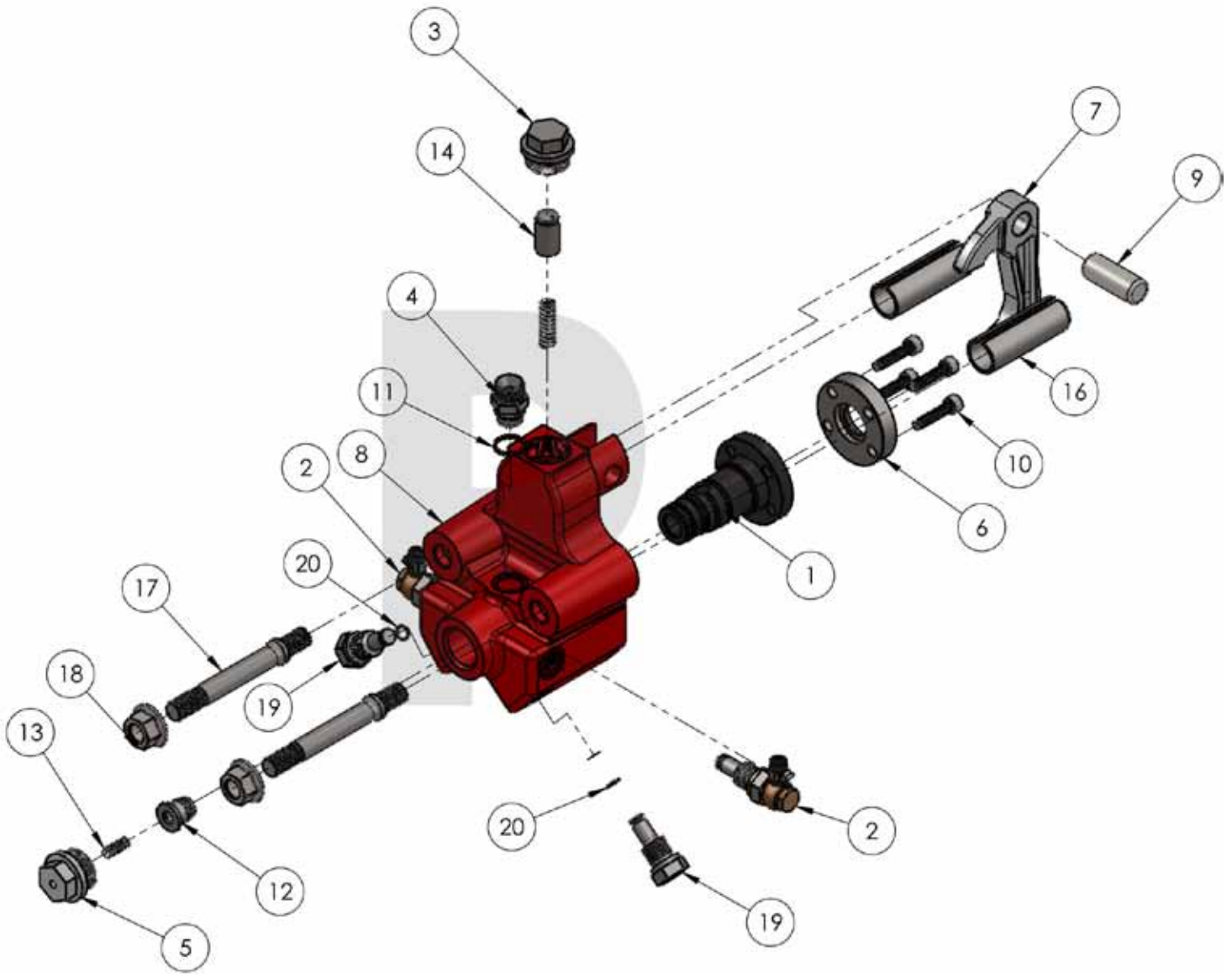
PILECO, Inc.

office (936)494-4200 • 1-800-409-0018 • fax (936)494-4517
www.Pileco.com • 3321 E Davis St • Conroe, TX 77301

Lube Pump



**Lube Pump
Complete**



Continued.....

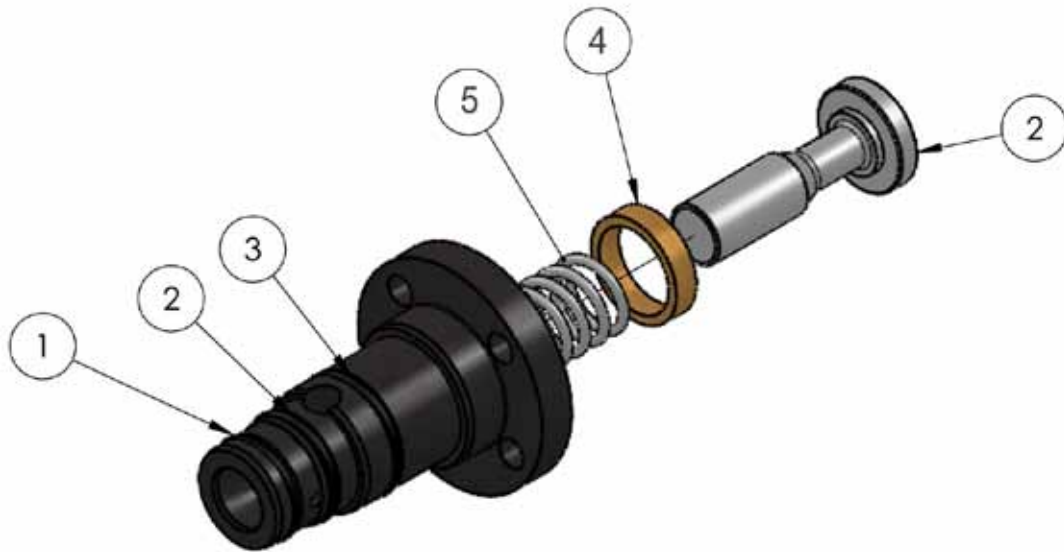
**Lube Pump
Complete**

*each part number links to web site part

ITEM NO.	PART NUMBER	DESCRIPTION	QTY.
1	67279	CYLINDER COMPLETE	1
2	108317	PRESSURE VALVE COMPLETE	3
3	91976	PLUG SCREW	1
4	67290	ADAPTER	1
5	108328	PLUG SCREW	1
6	67282	WASHER	1
7	22081	LUBE PUMP LEVER	1
8	108315	LUBE PUMP BODY	1
9	22082	PUMP LEVER PIN	1
10	90937	M8 x 35 DIN 912 8.8	4
11	92031	SEALING RING A20 X 24	1
12	67284	PISTON COMPLETE	1
13	190479	PRESSURE SPRING 7.3 X 29.4 X 1.2	1
14	22090	SLEEVE	1
15	22089	PRESSURE SPRING 10 X 43 X 2	1
16	94315	DOWEL PIN 28 X 80 DIN 7346	2
17	20189	PUMP STUD M16	2
18	94722	M16 WASHER NUT	2
19	108316	PLUG SCREW	1
20	97855	O RING 8 X 2	1

PILECO, Inc.

office (936)494-4200 • 1-800-409-0018 • fax (936)494-4517
www.Pileco.com • 3321 E Davis St • Conroe, TX 77301

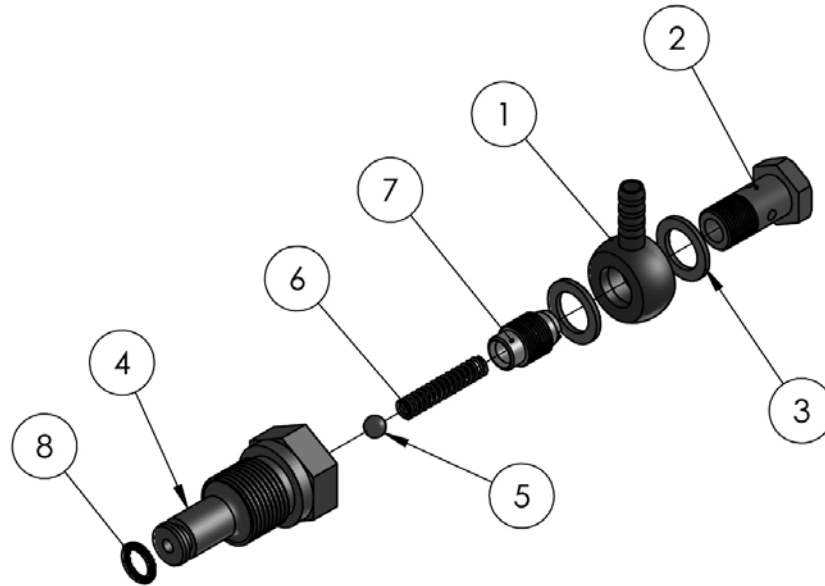
**Cylinder
Complete**


*each part number links to web site part

ITEM NO.	PART NUMBER	DESCRIPTION	QTY.
1	205020	O RING 24 X 3	1
2	91357	O RING 26 X 3	1
3	92952	O RING 30 X 3	1
4	67283	RING	1
5	97325	PRESSURE SPRING 22 X 52 X 2, 8	1

PILECO, Inc.

office (936)494-4200 • 1-800-409-0018 • fax (936)494-4517
www.Pileco.com • 3321 E Davis St • Conroe, TX 77301

**Pressure Valve
Complete**


*each part number links to web site part

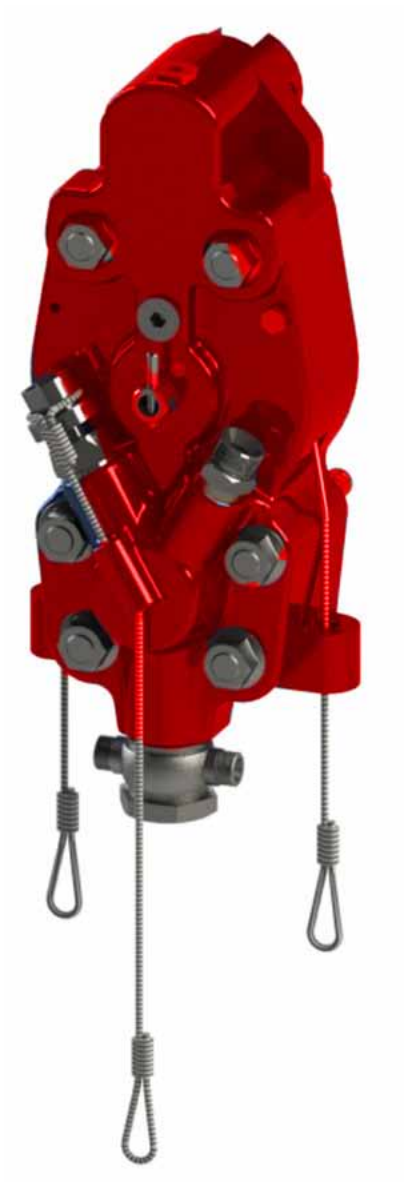
ITEM NO.	PART NUMBER	DESCRIPTION	QTY.
1	97949	RING NIPPLE	1
2	97948	HOLLOW SCREW A6 DIN 7623-6.8	1
3	91417	SEALING RING A12 X 15.5 DIN 7603-CU	2
4	108319	ADAPTER	1
5	90307	BALL 6MM DIN 5401	1
6	190005	PRESSURE SPRING 5 X 36 X 0.8	1
7	104679	PLUG SCREW	1
8	97855	8 X 2 O-RING	1

**SOLD
TOGETHER**

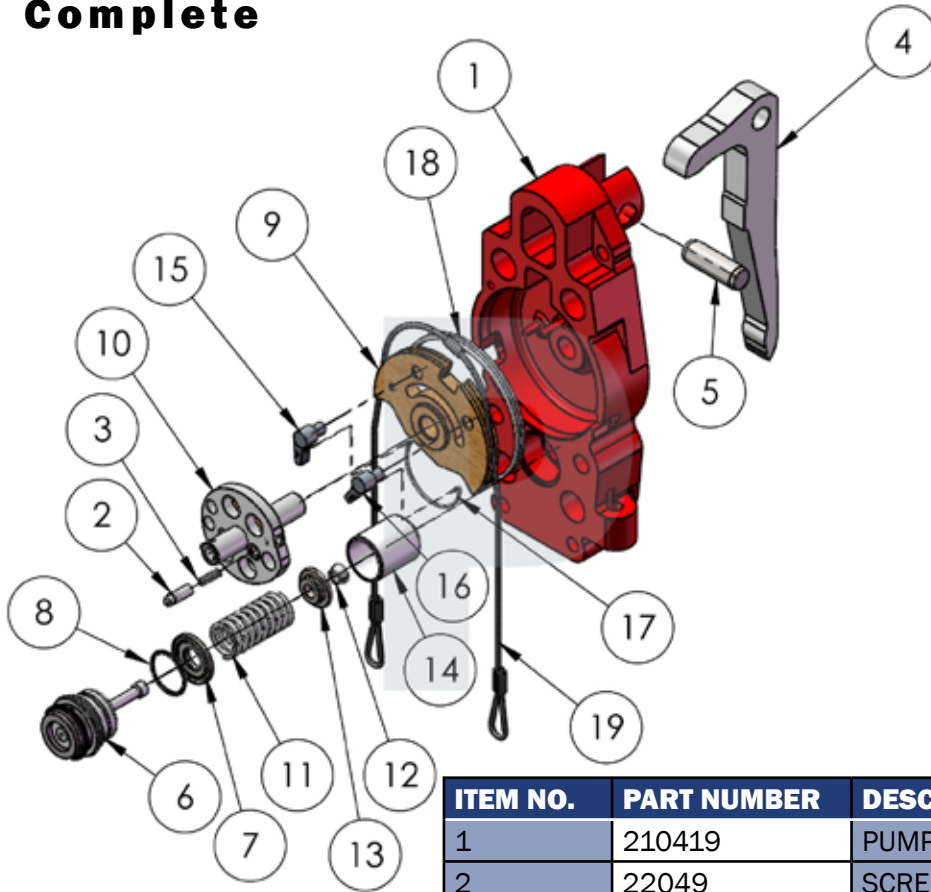
PILECO, Inc.

office (936)494-4200 • 1-800-409-0018 • fax (936)494-4517
www.Pileco.com • 3321 E Davis St • Conroe, TX 77301

Manual Delivery Fuel Pump



Manual Variable Delivery Fuel Pump Complete

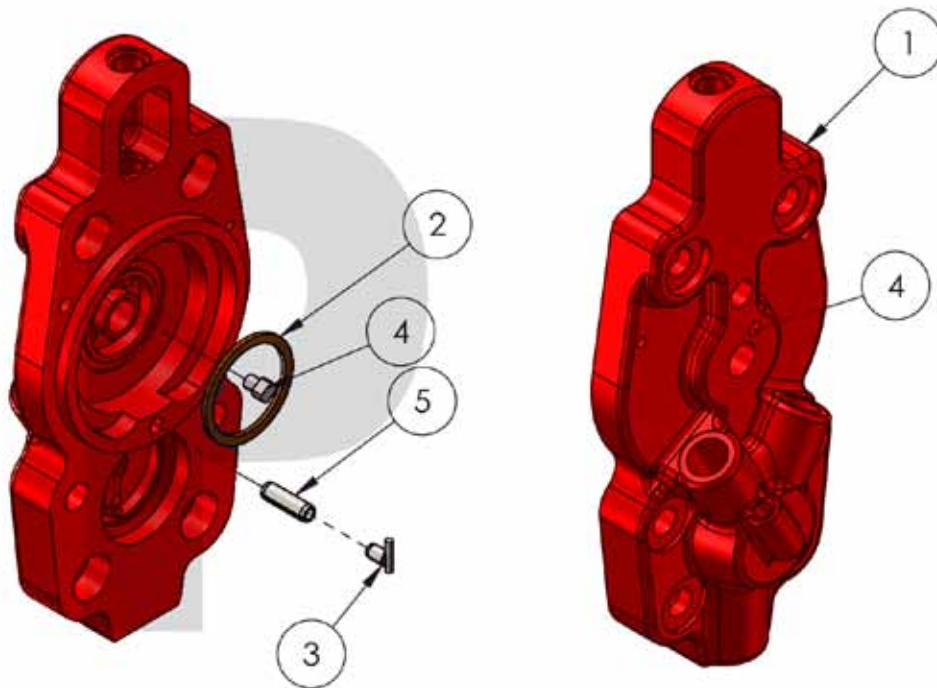


*each part number links to web site part

ITEM NO.	PART NUMBER	DESCRIPTION	QTY.
1	210419	PUMP BODY	1
2	22049	SCREEN PIN	1
3	22044	PRESSURE SPRING 5.5 X 20 X 1.2	1
4	210409	PUMP LEVER	1
5	22043	PUMP LEVER PIN	1
6	220409	D160 PUMP ELEMENT COMPLETE 45MM	1
7	210411	HOLDER RING	1
8	210410	ROUND SEALING RING 48.7 X 2.65	1
9	22040	ROPE DISC	1
10	43308	SWITCH SHAFT	1
11	22060	PRESSURE SPRING 28 X 67.2 X 3.5	1
12	22059	CONICAL RING 2 PCS	1
13	22058	SPRING RETAINING COLLAR	1
14	43287	GUIDE SLEEVE	1
15	22051	CAM	1
16	22052	CAM	1
17	22245	SPRING	1
18	22062	SWIVEL SPRING	1
19	17546	REGULATION ROPE	1

PILECO, Inc.

office (936)494-4200 • 1-800-409-0018 • fax (936)494-4517
www.Pileco.com • 3321 E Davis St • Conroe, TX 77301

**Manual Variable Delivery Fuel
Pump Cover Complete**


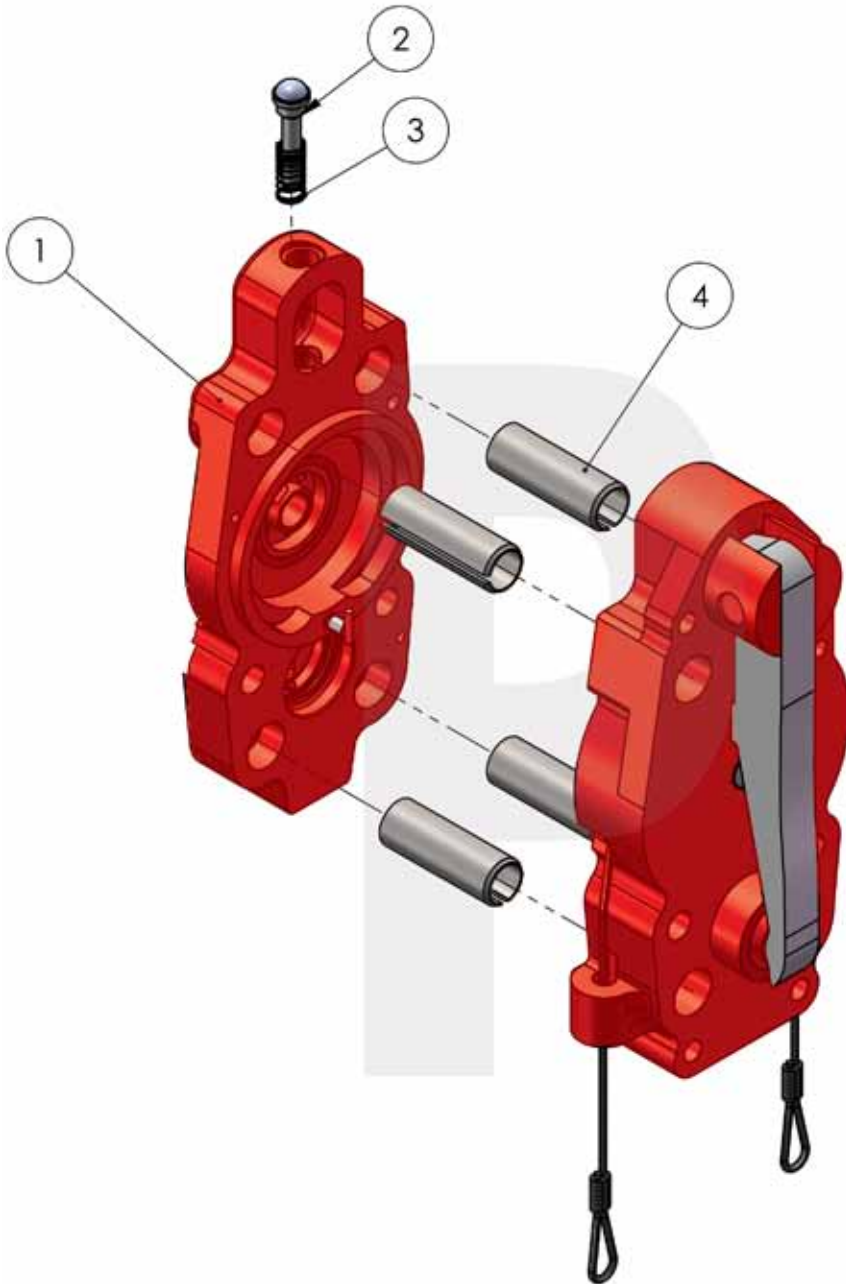
*each part number links to web site part

ITEM NO.	PART NUMBER	DESCRIPTION	QTY.
1	210420	PUMP COVER	1
2	22050	RING	1
3	22796	STOP	1
4	43307	STOP PIN	1
5	90231	10MM X 32 ROLL PIN	1

PILECO, Inc.

office (936)494-4200 • 1-800-409-0018 • fax (936)494-4517
www.Pileco.com • 3321 E Davis St • Conroe, TX 77301

Manual Variable Delivery Fuel Pump Complete



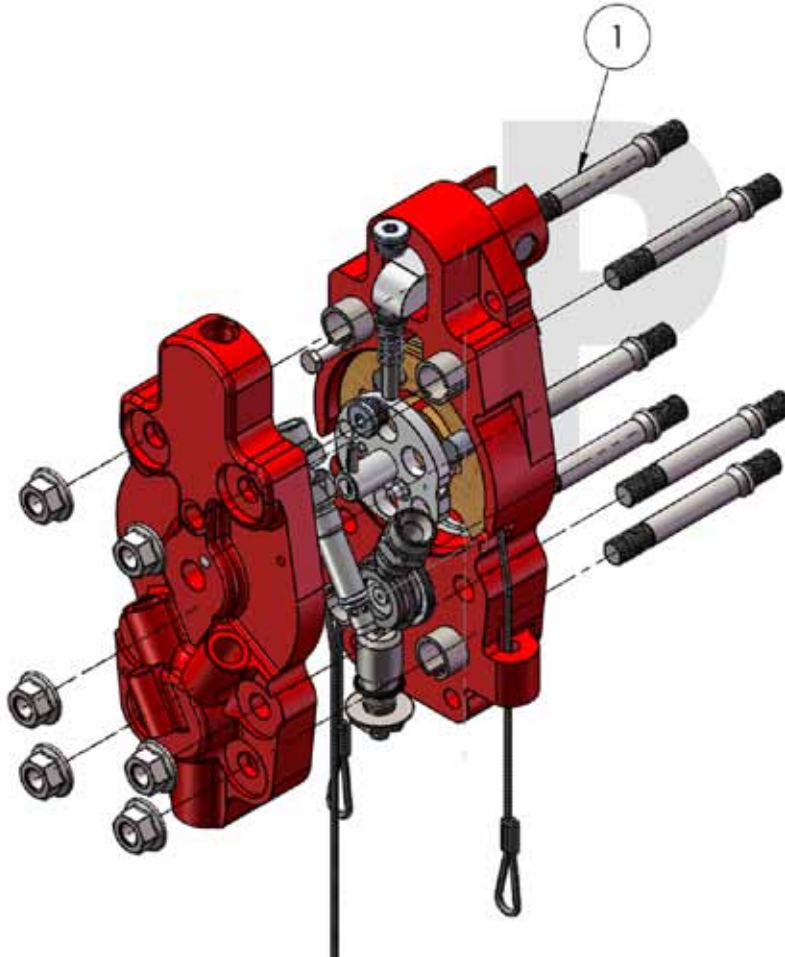
*each part number links to web site part

ITEM NO.	PART NUMBER	DESCRIPTION	QTY.
1	210420	PUMP COVER complete	1
2	62125	PRESSURE PIECE	1
3	22046	PRESSURE SPRING	1
4	94315	DOWEL PIN 28 X 80	4

PILECO, Inc.

office (936)494-4200 • 1-800-409-0018 • fax (936)494-4517
 www.Pileco.com • 3321 E Davis St • Conroe, TX 77301

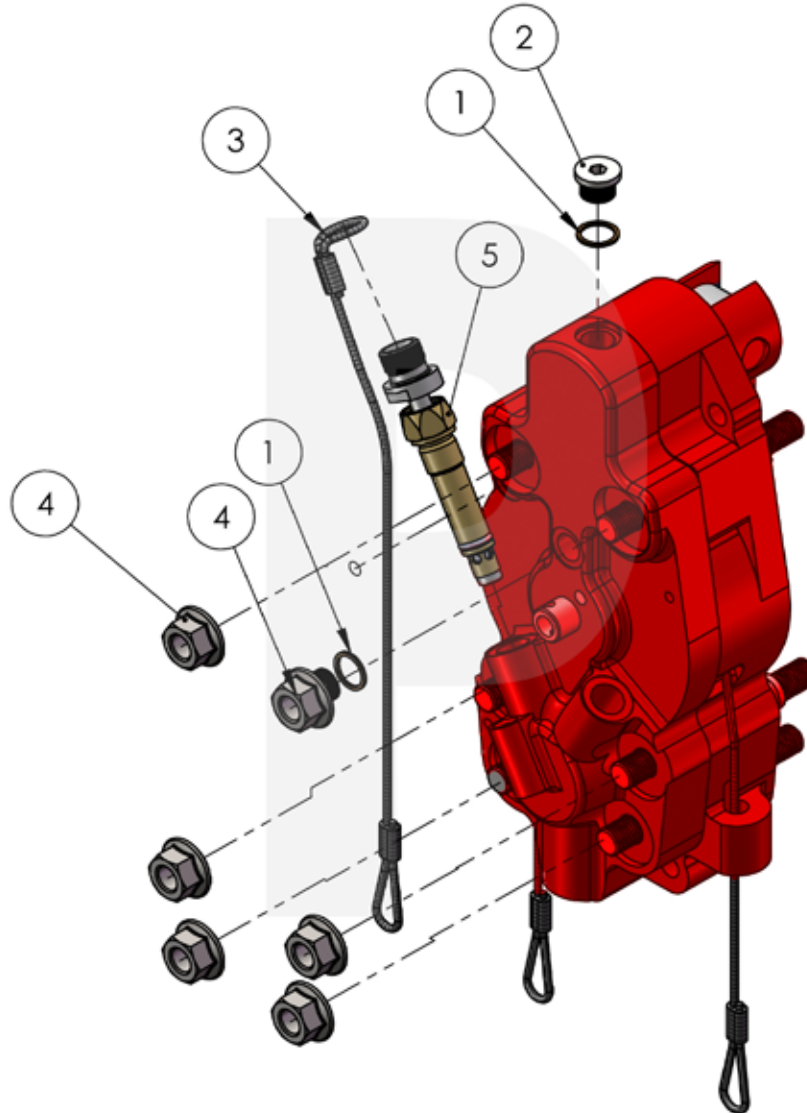
Manual Variable Delivery Fuel Pump Complete



*each part number links to web site part

ITEM NO.	PART NUMBER	DESCRIPTION	QTY.
1	20189	PUMP STUD M16	6

Manual Variable Delivery Fuel Pump Complete



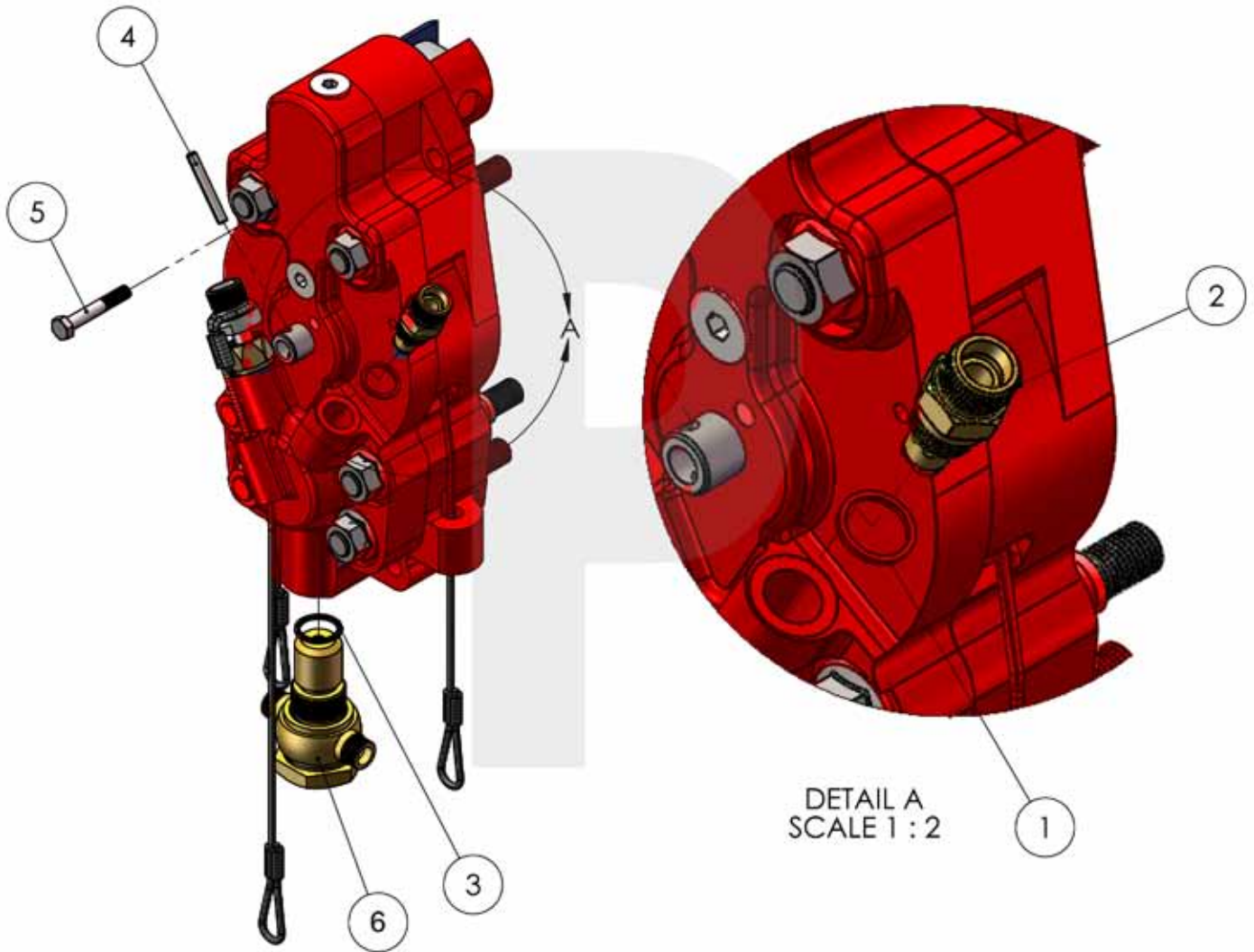
*each part number links to web site part

ITEM NO.	PART NUMBER	DESCRIPTION	QTY.
1	90002	SEALING RING A18 X 22	2
2	93055	PLUG SCREW M18 X 1.5	2
3	17546	REGULATING ROPE	1
4	94722	M16 WASHER NUT	6
5	210422	STOP VALVE COMPLETE	1

PILECO, Inc.

office (936)494-4200 • 1-800-409-0018 • fax (936)494-4517
www.Pileco.com • 3321 E Davis St • Conroe, TX 77301

Manual Variable Delivery Fuel Pump Complete



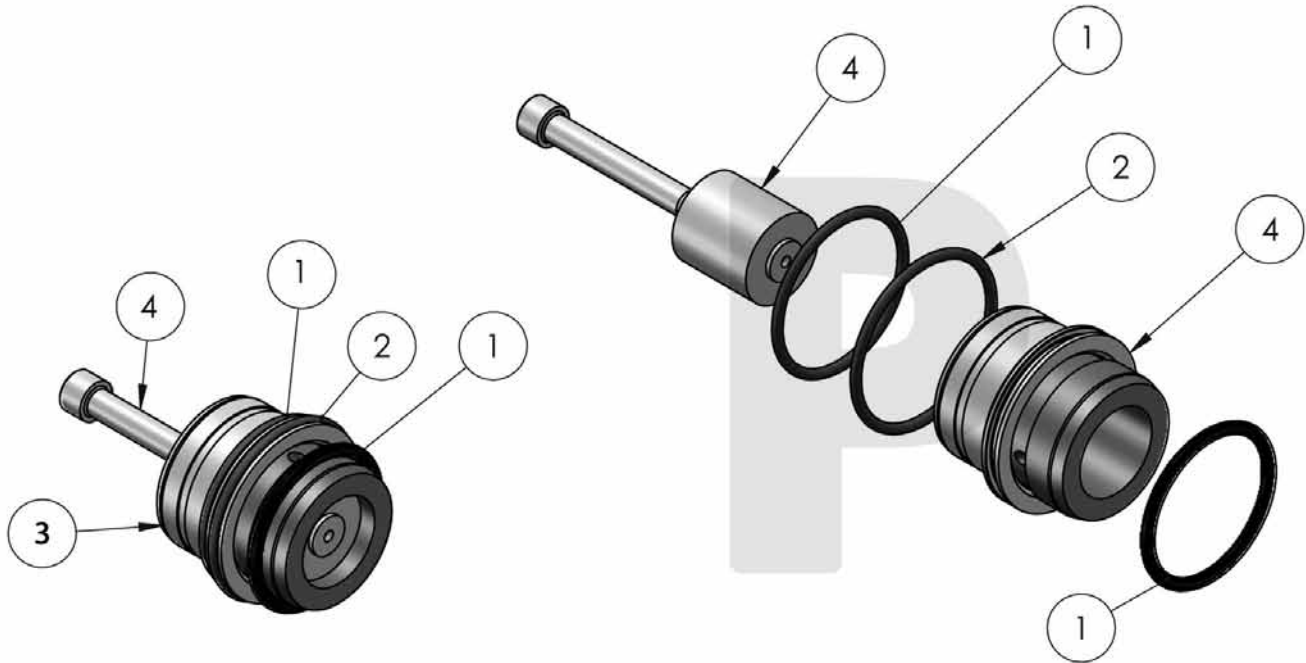
*each part number links to web site part

ITEM NO.	PART NUMBER	DESCRIPTION	QTY.
1	210412	SEALING RING A25 X 30	1
2	210421	SUCTION VALVE complete	1
3	91296	O-RING 22 X 3	1
4	90150	DOWEL PIN 6 X 40	1
5	93456	LOCKING SCREW M8 X 50	1
6	60827	CHECK NON-RETURN VAVLE COMPLETE	1

PILECO, Inc.

office (936)494-4200 • 1-800-409-0018 • fax (936)494-4517
www.Pileco.com • 3321 E Davis St • Conroe, TX 77301

45MM Pump Element Complete



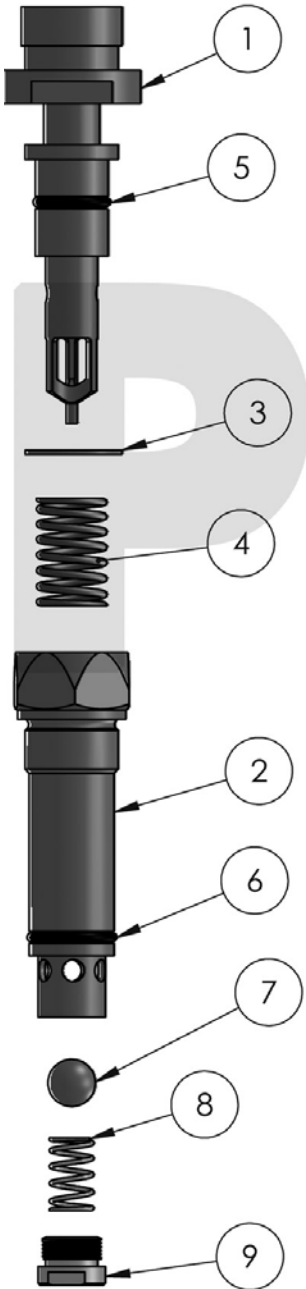
**each part number links to web site part*

ITEM NO.	PART NUMBER	DESCRIPTION	QTY.
1	210416	ROUND SEALING RING 56 X 2.65	2
2	210417	ROUND SEALING RING 60 X 2.65	1
3 not sold seperately	220409	45MM ELEMENT BODY	1
4 not sold seperately	220409	45MM ELEMENT PLUNGER	1

PILECO, Inc.

office (936)494-4200 • 1-800-409-0018 • fax (936)494-4517
 www.Pileco.com • 3321 E Davis St • Conroe, TX 77301

Stop Valve Complete



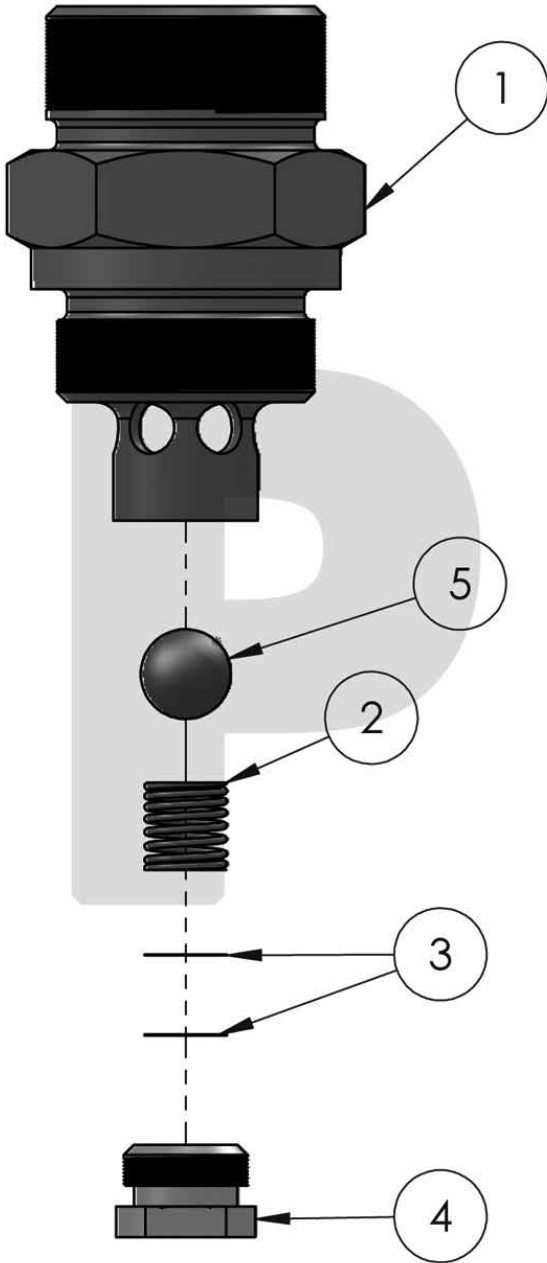
*each part number links to web site part

ITEM NO.	PART NUMBER	DESCRIPTION	QTY.
1	210423	VALVE PISTON	1
2	210429	VALVE SCREW	1
3	210430	25 X 1.2 CIRCLIP	1
4	210424	PRESSURE SPRING 18.8 X 2 X 30	1
5	210428	O RING 15 X 2.65	1
6	210425	O RING 18 X 2.65	1
7	210431	12.7MM BALL BEARING	1
8	210427	PRESSURE SPRING 12 X 1.2 X19.5	1
9	210426	THREADED PLUG	1

PILECO, Inc.

office (936)494-4200 • 1-800-409-0018 • fax (936)494-4517
 www.Pileco.com • 3321 E Davis St • Conroe, TX 77301

Suction Valve Complete



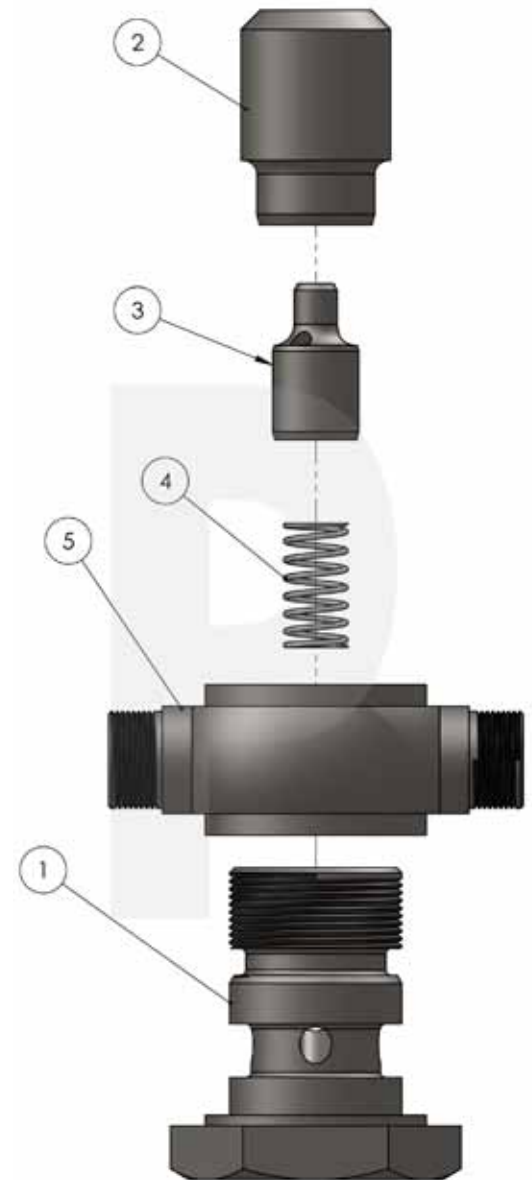
**each part number links to web site part*

ITEM NO.	PART NUMBER	DESCRIPTION	QTY.
1	210432	SLEEVE	1
2	22022	PRESSURE SPRING 7.3 X 8 X 0.7	1
3	22023	WASHER	2
4	41862	THREADED PLUG	1
5	98511	BALL 8.731MM	1

PILECO, Inc.

office (936)494-4200 • 1-800-409-0018 • fax (936)494-4517
www.Pileco.com • 3321 E Davis St • Conroe, TX 77301

Check Non-Return Valve Complete



*each part number links to web site part

ITEM NO.	PART NUMBER	DESCRIPTION	QTY.
1	60194	HOLLOW SCREW	1
2	43297	HOUSING	1
3	43299	VALVE PISTON	1
4	22034	PRESSURE SPRING	1
5	60195	RING NIPPLE	1